

# WASHINGTON COMMUNITIES IN CRISIS

A financial crisis is putting millions of Washingtonians' safety at risk.

## THE SITUATION

Counties and cities are responsible for law enforcement, criminal justice, and public safety. But, for the last decade, Washington counties and cities have faced a 1% cap on the annual property tax increases they can receive.

Over time, costs have outpaced revenue, creating a budget gap that **gets worse every year.**

COST OF MAINTAINING SERVICES

REVENUE (1% LIMIT)

2006 2007 2008 2009 2010 2011 2012 2013 2014 2015 2016

## THE IMPACT

To fund public safety, counties and cities have had to use road funds, tap into reserves, and cut employees. Even with these cuts, it is getting increasingly harder every year to fund public safety.

Fewer deputies on the road

Cuts to law enforcement training

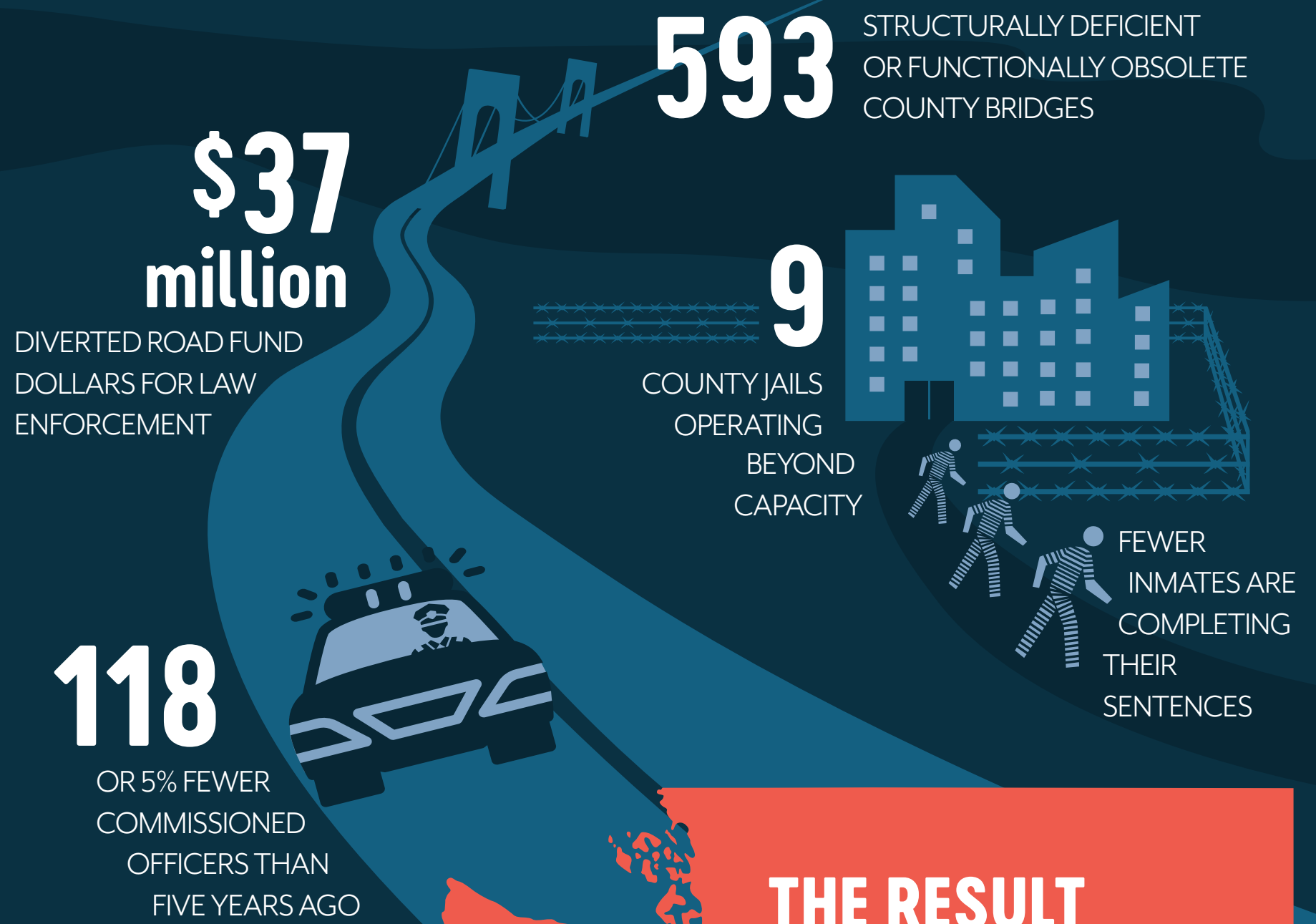
Delayed public safety response times

Caps on inmates booked into county jails

Overcrowding in jails

Road fund diversion to law enforcement

Dangerous roads and bridges



## THE RESULT

Washington State is less safe than it was a decade ago—and it's only going to get worse.

## THE SOLUTION

The legislature needs to restore local control to our counties and cities. Our citizens deserve elected officials who have the authority to account for inflation and population growth. Keep communities strong. Empower local control.

**Use #LocalControl when helping to spread awareness on this issue.**